

PT-15

15 mm Carbon Potentiometer



FEATURES

- Carbon resistive element.
- Nnloy substrate
- Also upon request:
 - Shafts (Only for "N", "F" rotors types).
 - Low torque option
 - Wiper positioned at initial, 50% or fully clockwise.
 - Cut track option.
 - Special Tapers.
 - Mechanical detents (Only for "V15" with 38 detents).
- ROHS compliant*

MECHANICAL SPECIFICATIONS

- Mechanical rotation angle: $265^\circ \pm 10^\circ$
- Torque: 50 to 200gf.cm
- Stop torque: > 1Kgf.cm
- Life*: Up to 10K cycles

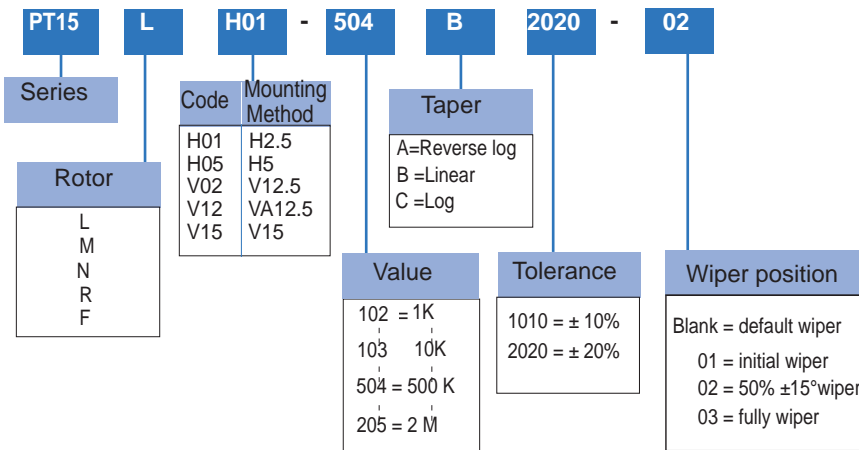
MATERIALS

- Driving plate&Housing:PA6
(Flammability rating:HB)
- Terminals:Tinned steel strip
- Reed: Tin bronze

ELECTRICAL SPECIFICATIONS

- Range of values*: $1K\Omega \leq R_n \leq 2M\Omega$
- Standard tolerance*: $\pm 20\%$
- Max. Voltage: 300 VDC
- Power rating $70^\circ C$:0.2W
- Taper*: Reverse log , Linear ,Log
- Residual resistance*: $\leq 10\Omega$
- Noise: $\leq 68mV$
- Operating temperature**: $-10^\circ C + 70^\circ C$

HOW TO ORDER



How to order examples

PT15L H01-103B2020

15mm potentiometer with rotor "L" (arrow shape), "H01" Mounting method(horizontal adjustment), 10K value and 20% resistive tolerance.

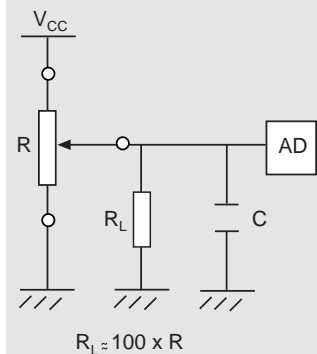
Standard values - tolerances

Resistance Ω	1K	2K	5K	10K	20K	25K	50K	100K	200K	250K	500K	1M	2M
How to order code	102	202	502	103	203	253	503	104	204	254	504	105	205
Standard tolerance	20%												

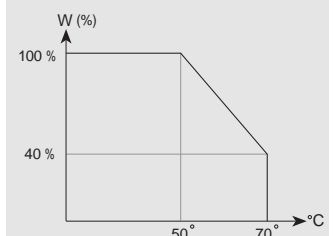
Typical weight

1 pc of PT15 weight: $1.32 \pm 0.03g$

Recommended connections

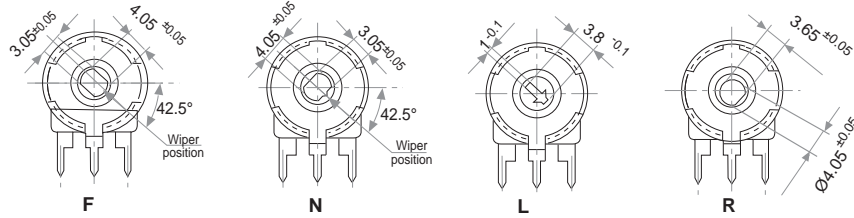


Power rating curve

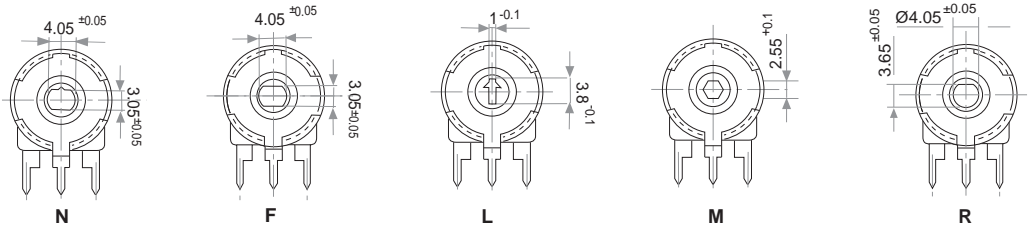


ROTORS

Wipers positioned at initial (without shaft)

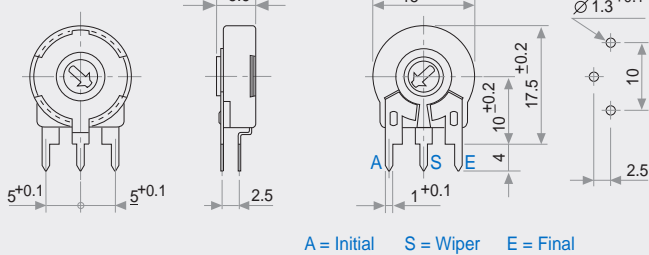


Wipers positioned at 50%±15° (without shaft)



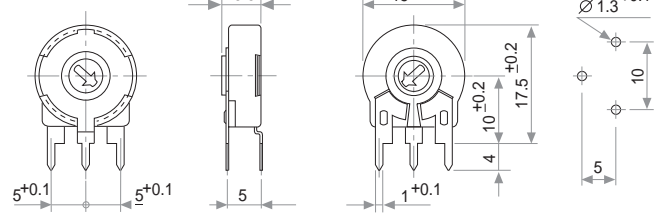
VERTICAL MOUNT - HORIZONTAL ADJUST

H (2.5)



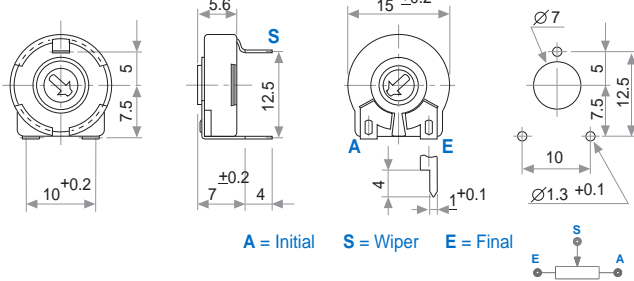
A = Initial S = Wiper E = Final

H (5)



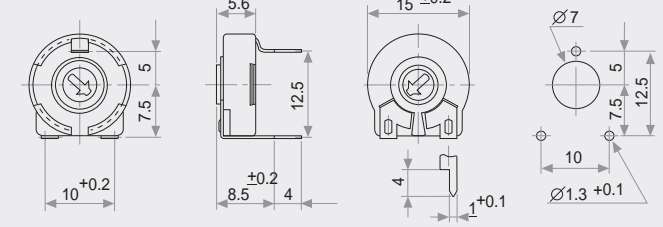
HORIZONTAL MOUNT - VERTICAL ADJUST

V (12.5)

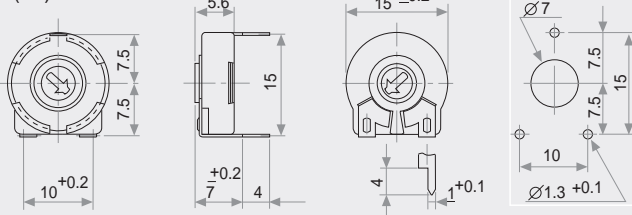


A = Initial S = Wiper E = Final

VA (12.5)



V (15)



GENERAL TOLERANCE

Dimension: Less than 10±0.3mm
 Above 10~30±0.5mm
 Above 30~100±1mm
 Angle: Above ___±5°

TESTS

MECHANICAL LIFE (CYCLES)	1000 @ 10 CPM ...15 CPM
TEMPERATURE COEFFICIENT	-10°C; +70°C
Heat resistance	16 h. @ 85°C
Moisture resistance	96 h. @ 40°C @ 95% HR

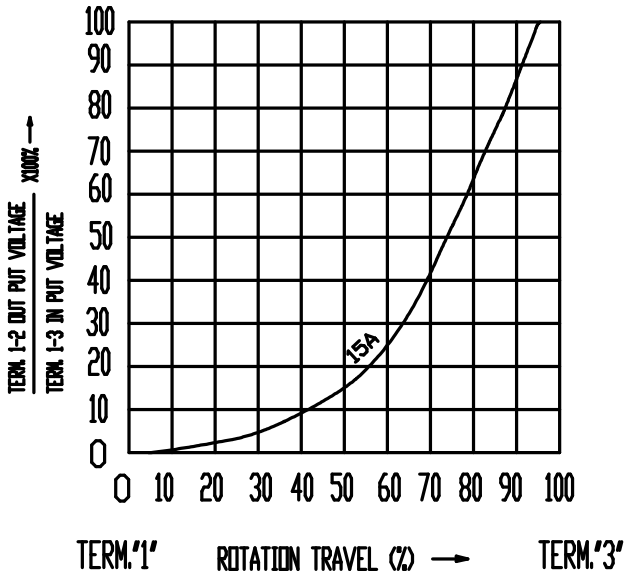
NOTE: Out of range values may not comply these results.

Soldering condition

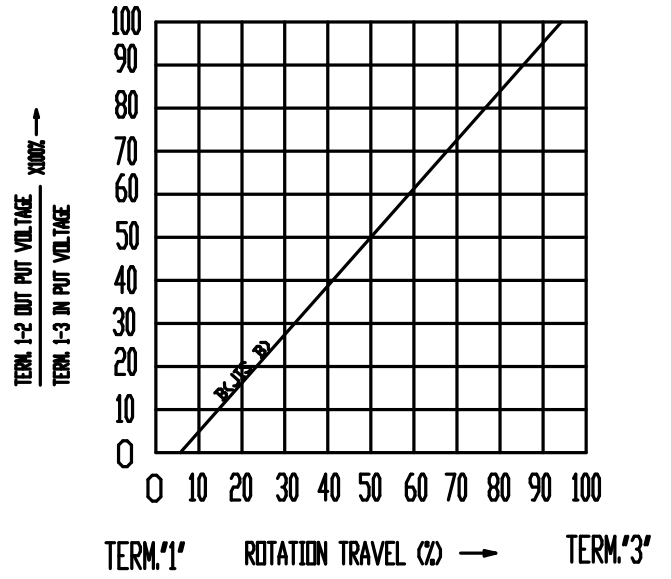
Wave soldering	260±5°C, 5±1second
Manual soldering	Max 350°C, within 3 second

Tapers

TAPERS (A) SERIES



TAPERS (B) SERIES



TAPERS (C) SERIES

