



Features

- Surface Mount / Single Turn / Cermet Industrial / Sealed
- J-hook, gull-wing & pinned configurations
- Precision adjustable, reliable performance
- RoHS compliant*

3314 – 4 mm Square Trimming Potentiometer

Electrical Characteristics

Standard Resistance Range 50 to 2 M
 (see standard resistance table)
 Resistance Tolerance $\pm 20\%$ std.
 (tighter tolerance available)
 End Resistance 1 % or 3 max.
 (whichever is greater)
 Contact Resistance Variation 3 % or 3 max.
 Resolution Infinite
 Insulation Resistance 500 VDC
 100 M min.
 Dielectric Strength 500 VAC (1 minute)
 Adjustment Angle 210° nom.

Environmental Characteristics

Power Rating (300 volts max.)
 70 °C 0.25 watt
 125 °C 0 watt
 Temperature Range -55 °C to +125 °C
 Temperature Coefficient ± 100 PPM/°C
 Vibration 20 G TRS $\pm 1\%$; VRS $\pm 1\%$
 Shock 100 G TRS $\pm 1\%$; VRS $\pm 1\%$
 Load Life
 ... (@ 70 °C Rated Power 1000 Hours)
 TRS $\pm 3\%$
 Rotational Life 100 cycles
 TRS $\pm 3\%$

Physical Characteristics

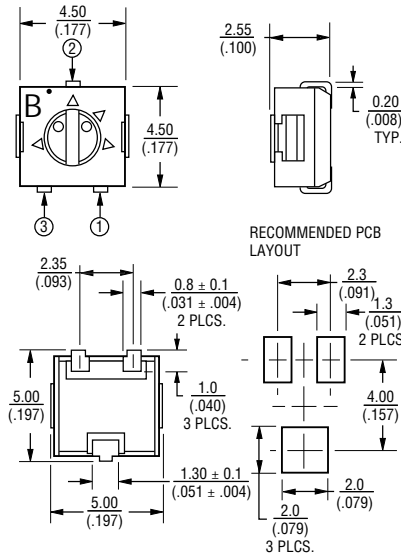
Mechanical Angle 240° nom.
 Torque 250 g-cm
 Stop Strength 300 g-cm
 Standard Packaging 500 pcs./7" reel
 Storage Condition 40 °C max. / 70 % R.H. max.

Standard Resistance Table

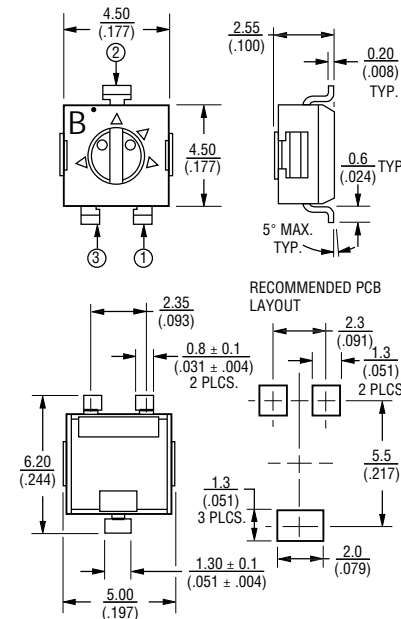
Resistance (Ohms)	Resistance Code
50	500
100	101
200	201
500	501
1,000	102
2,000	202
5,000	502
10,000	103
20,000	203
50,000	503
100,000	104
200,000	204
250,000	254
500,000	504
1,000,000	105
2,000,000	205

Product Dimensions

3314J-1



3314G-1

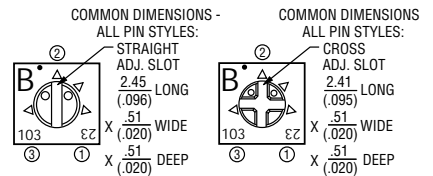


How To Order

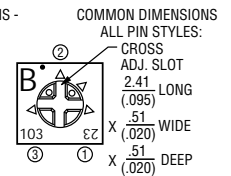
3314 - G - 1 - 503 E

Model _____
 Style _____
 Standard Product Indicator _____
 -1 = Straight Slot
 -2 = Cross Slot
 Resistance Code _____
 Packaging _____
 E = 500 pcs. / 7" reel
 G = 3000 pcs. / 13" reel

3314J-1, G-1 (Straight Slot)



3314J-2, G-2 (Cross Slot)

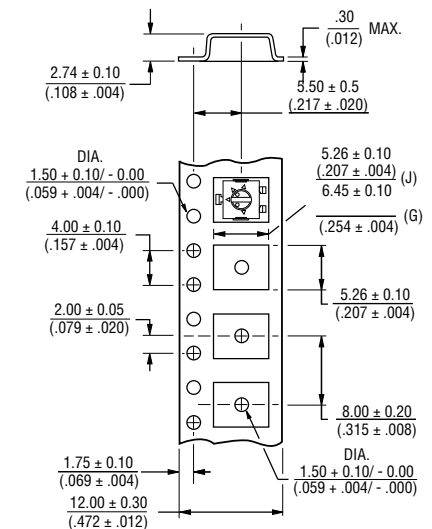


DIMENSIONS: MM (INCHES)

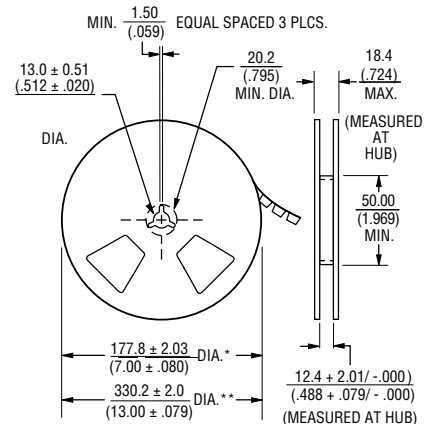
TOLERANCES: ± 0.25 (.010) EXCEPT WHERE NOTED

Packaging Specifications

TAPE



REEL



* Embossed Tape Designator "E"
 ** Embossed Tape Designator "G"
 (See How To Order chart for further information.)