

Features

- Carbon element
- Ganging up to 4 sections available
- Knurled / flatted / plain shaft styles
- Center and 41 detents options
- RoHS compliant*

RA09 Series - 9 mm Multi-Ganged Potentiometer

Electrical Characteristics

Standard Resistance Range 1 K ohms to 1 M ohms
 Total Resistance Tolerance ±20 %
 Standard Tapers Linear & Reverse log & Log
 Maximum Operating Voltage 50 VAC, 10 VDC
 Rated Power 0.05 watts
 Noise 68 mV max.
 Insulation Resistance @ 250 VDC 100 M ohms min
 Dielectric Withstanding Voltage 250 VAC
 Total Resistance error 20%R

Environmental Characteristics

Operating Temperature -10 °C to +75 °C
 Rotational Life 10,000 cycles

Mechanical Characteristics

Mechanical Angle 300 ° ±10 °
 Rotational Torque 10 to 250 gf-cm
 Stop Strength 4.0 kgf-cm min
 Shaft Wobble 0.5 x L/30 mm p-p max.
 L=Shaft length

Soldering Condition

Manual Soldering 350 °C max. for 3 seconds
 Wave Soldering 260 °C max. for 5 seconds

Mounting Hardware

..... One flat washer and one hex nut supplied per potentiometer

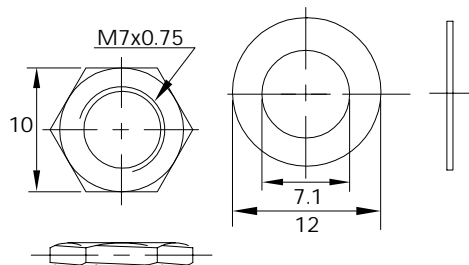
Materials

Shaft Aluminum
 Bushing Zinc alloy
 Driving plate POM
 Rivet Aluminum
 Reed Phosphor copper
 Base PBT
 Carbon plate FR4 substrate
 Terminal Cold rolled strip
 Cover plate PBT

Hardware

Nut

Washer



How To Order

RA09 V - 1 - A - 15 K - B 103 - 0

Model _____
 • RA09 =
 No Switch
 Structure
 • V = Vertical
 • H = Horizontal
 No. of Sections _____
 • 1 = 1 Section
 • 2 = 2 Sections
 • 3 = 3 Sections
 • 4 = 4 Sections (only for "RA09H")
 Bushing length _____
 • A = 5 mm
 • B = 7 mm
 Shaft Length _____
 • 15 = 15 mm
 • 20 = 20 mm
 • 25 = 25 mm
 Shaft Styles _____
 • K = Knurled Type Shaft (Metal)
 • F = Flatted Metal Shaft
 • P = Plain Metal Shaft
 Resistance Taper _____
 • A = Reverse log
 • B = Linear
 • C = Log
 Resistance Code _____
 (See Table)
 Detent options _____
 • 0 = No detent
 • 1 = Center detent
 • 2 = 41 detents

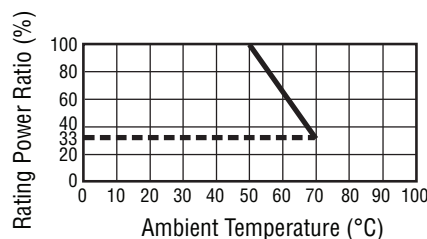
Standard Resistance Table

Resistance (Ohms)	Resistance Code
1,000	102
2,000	202
5,000	502
10,000	103
20,000	203
50,000	503
100,000	104
200,000	204
500,000	504
1,000,000	105

Typical weight

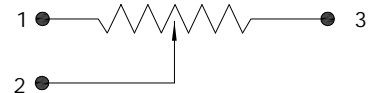
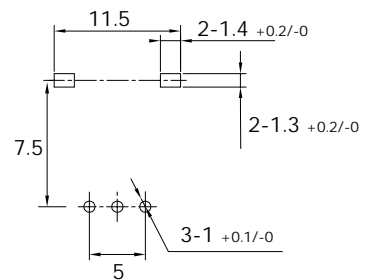
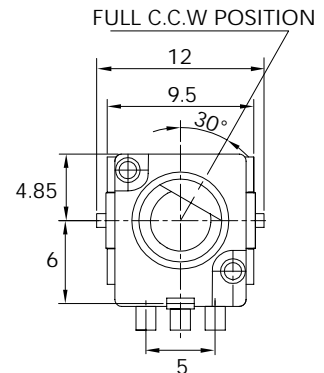
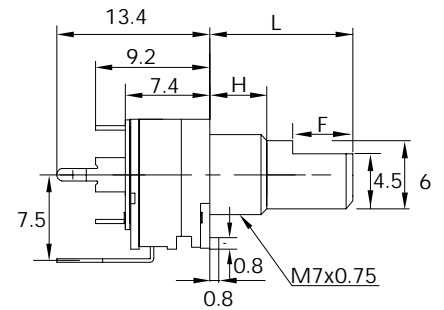
1 pc of RA09 weight 5g±2g

Derating Curve



Product Dimensions

RA09V-1



General Tolerance

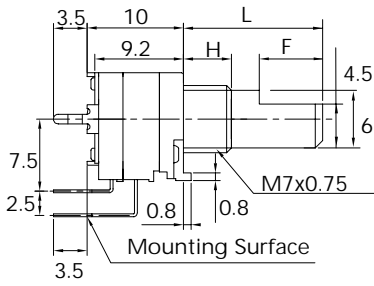
Dimension:

Less than 10 ± 0.3mm
 Above 10~30 ± 0.5mm
 Above 30~100 ± 1mm
 Angle: Above ± 5 °

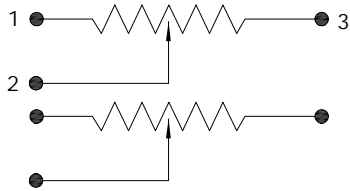
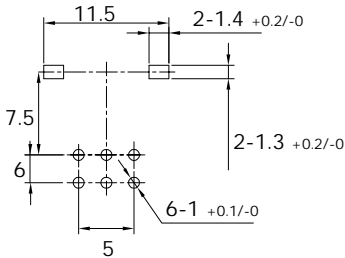
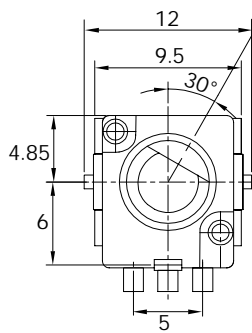
RA09 Series - 9 mm Multi-Ganged Potentiometer

Product Dimensions

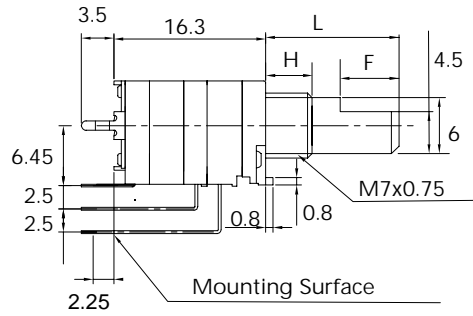
RA09V-2



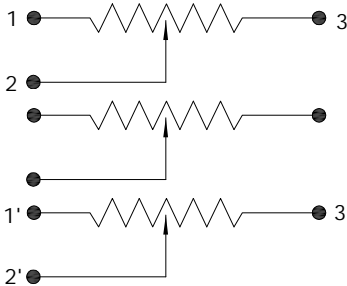
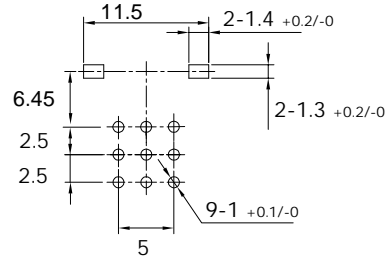
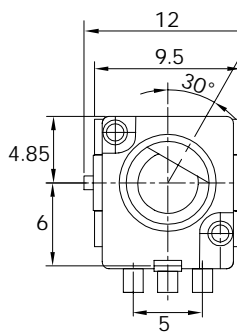
FULL C.C.W POSITION



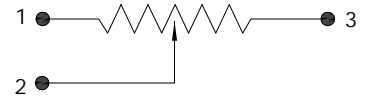
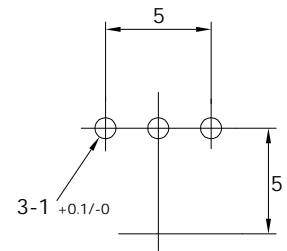
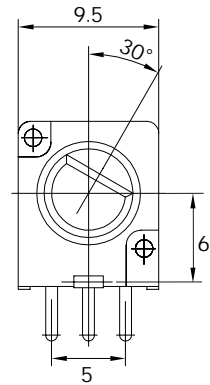
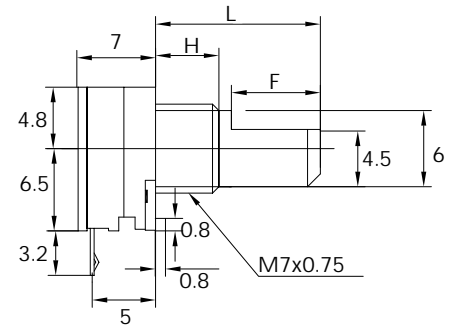
RA09V-3



FULL C.C.W POSITION

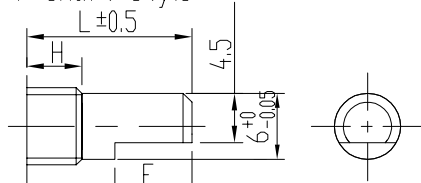


RA09H-1



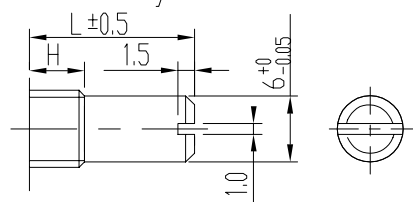
Shaft Styles

F Shaft Style



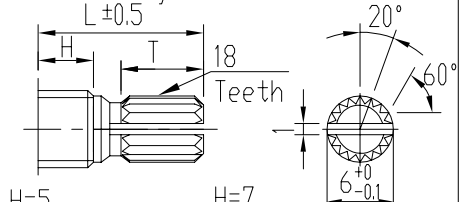
H=5				H=7			
L	15	20	25	L	15	20	25
F	7	12	12	F	7	12	12

P Shaft Style



L	15	20	25
---	----	----	----

K Shaft Style

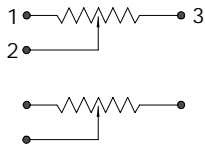
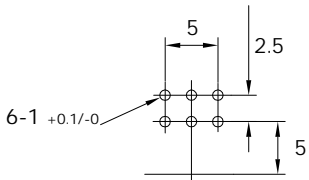
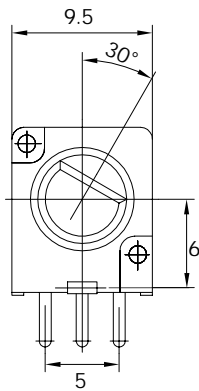
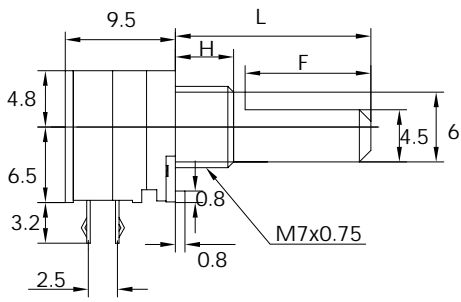


H=5				H=7			
L	15	20	25	L	15	20	25
T	6	10	12	T	6	10	12

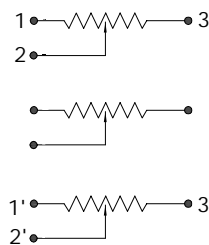
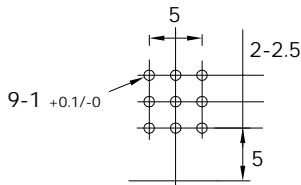
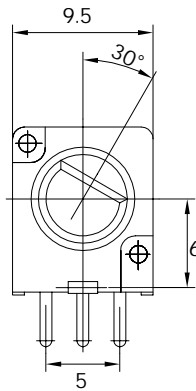
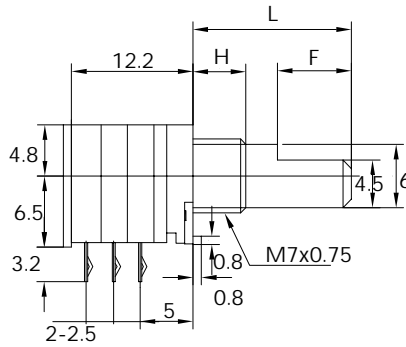
RA09 Series - 9 mm Multi-Ganged Potentiometer

Product Dimensions

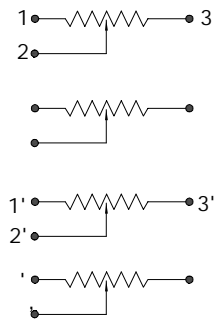
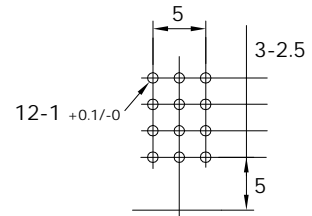
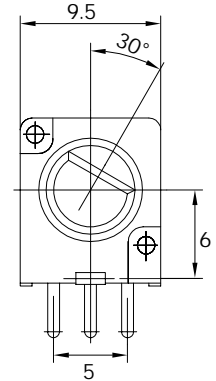
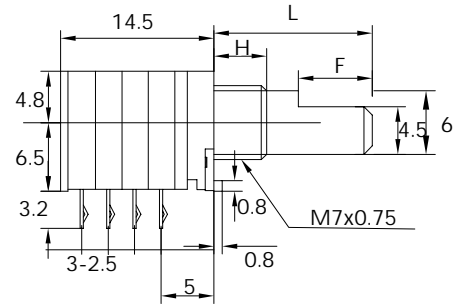
RA09H-2



RA09H-3

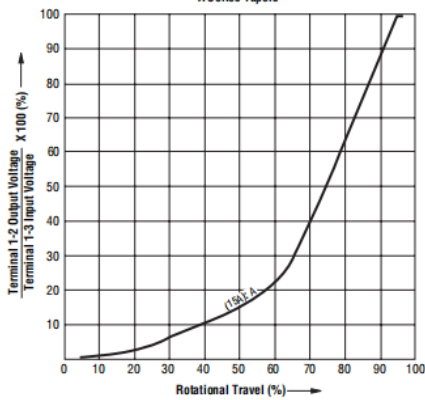


RA09H-4

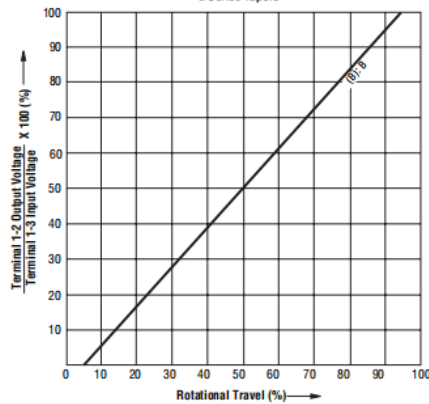


Tapers

A Series Tapers



B Series Tapers



C Series Tapers

