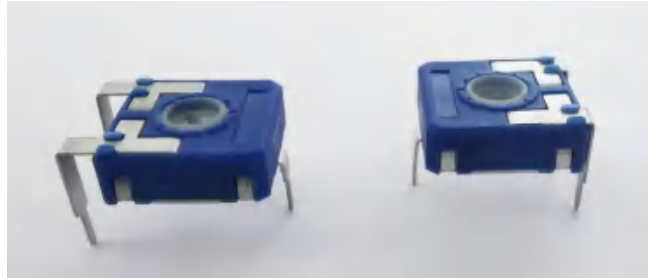


Automotive / Appliance control - sensor

14 mm carbon potentiometer CA14



Mechanical specifications

Mechanical rotation angle	265° ± 10°
Torque rotational stop	10~80gf.cm 400gf.cm min
Life	up to 10K cycles

Electrical specifications

Range of values ¹	1KΩ ≤ Rn ≤ 2MΩ
Standard tolerance	± 20%
Max. voltage	200 VDC
Rating power 70°C	0.15 W
Taper	Reverse log , Linear , Log
Residual resistance	≤ 10 Ω
Slider noise	≤ 68mV
Operating temperature ²	-10°C to +70°C

¹ Others: check availability. ² Up to 85°C depending on application.

Materials

Driving plate&Housing	PA6 (Fammability rating: HB)
Terminals	Tinned steel strip
Reed	Tin bronze

Features

- Carbon resistive element.
- Dust proof enclosure.
- Nnloy substrate
- Wiper positioned at initial, 50% or fully clockwise.
- * ROHS compliant

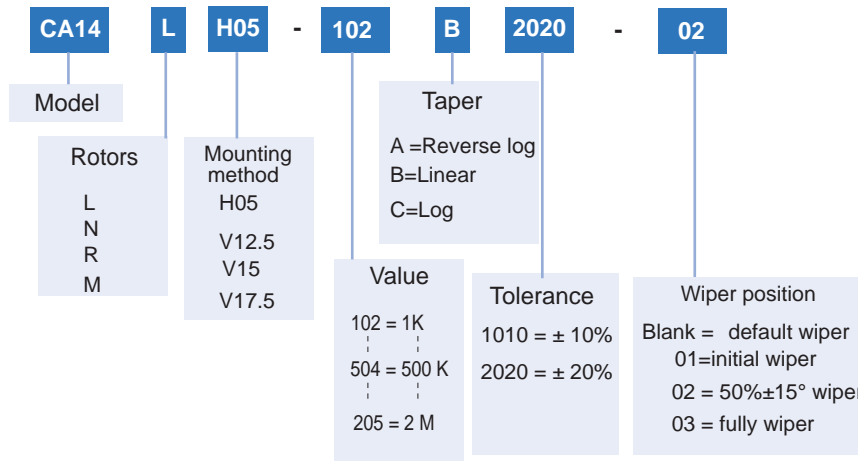
Applications

Typical applications include test and measurement equipment, consumer electronics, appliances, small engines, robotics, motion controllers, and medical equipment control panels.

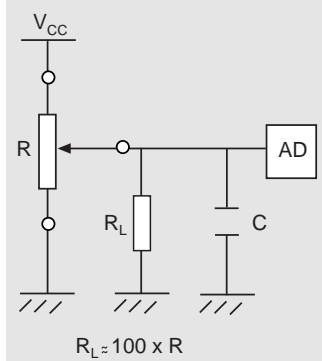
Automotive / Appliance control - sensor

14 mm carbon potentiometer CA14

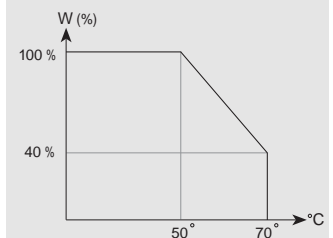
How to order



Recommended connections



Power rating curve



How to order examples

CA14LH05 -103B2020

14mm potentiometer with rotor "L" (arrow shape) , "H05" Mounting methods (vertical mounting – horizontal adjustment) , 10K value and 20% resistive tolerance, default wiper.

Standard values - tolerances

Resistance Ω	1K	2K	5K	10K	20K	25K	50K	100K	200K	250K	500K	1M	2M
How to order code	102	202	502	103	203	253	503	104	204	254	504	105	205
Standard tolerance	20%												

Tests

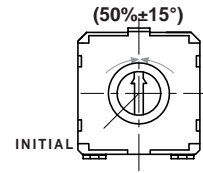
Mechanical life (cycles)	1000 @ 10 CPM ...15 CPM
Temperature coefficient	-10°C to+70°C
Heat resistance	16 h. @ 85°C
Moisture resistance	96 h. @ 40°C @ 95% HR

Soldering condition

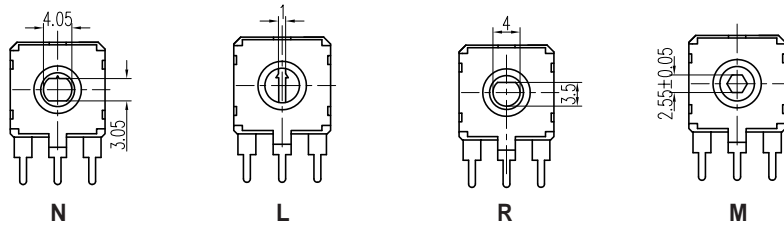
Wave soldering	Max 260 C° , within 5 second
Manual soldering	Max 300 C° , within 3 second

Automotive / Appliance control - sensor

14mm carbon potentiometer CA14



Rotors (Wipers are shown positioned at 50% for the picture)
Without shaft or knob.



All rotors are thru-hole.

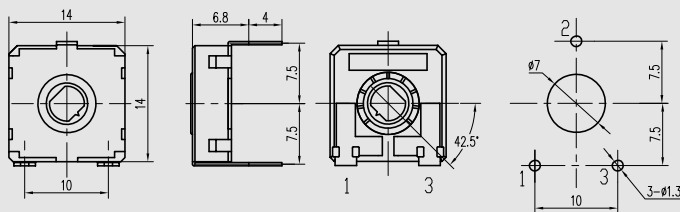
General tolerance

Dimension: Less than 10 ± 0.3mm
Above 10–30 ± 0.5mm
Above 30–100 ± 1mm
Angle: Above ___ ± 5°

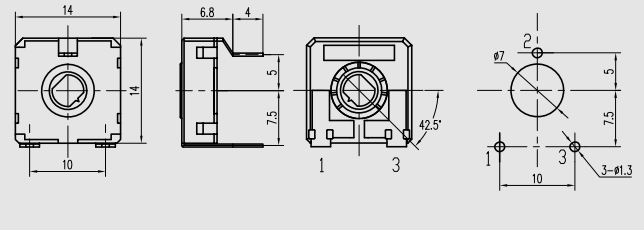
Mounting methods. Dimensions

V = horizontal mounting – vertical adjustment

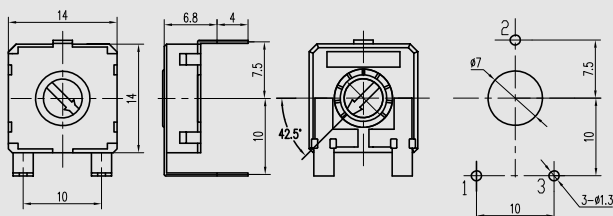
V15



V12.5

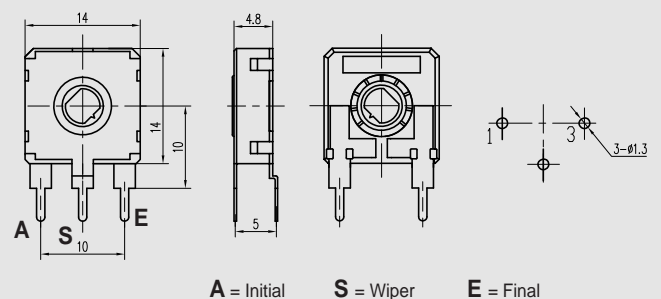


V17.5



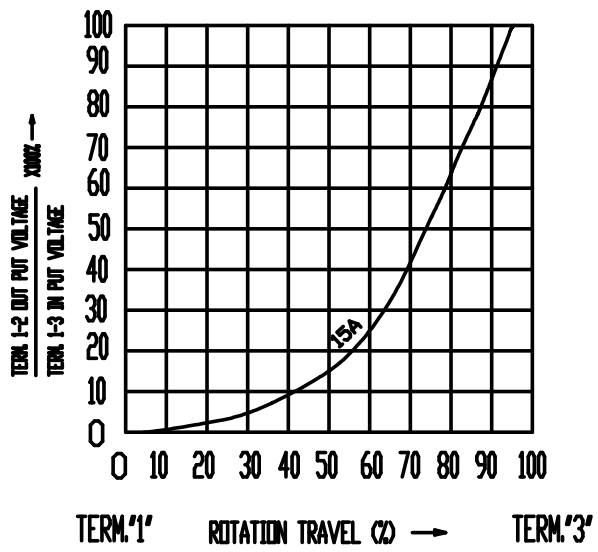
H = vertical mounting – horizontal adjustment

H05

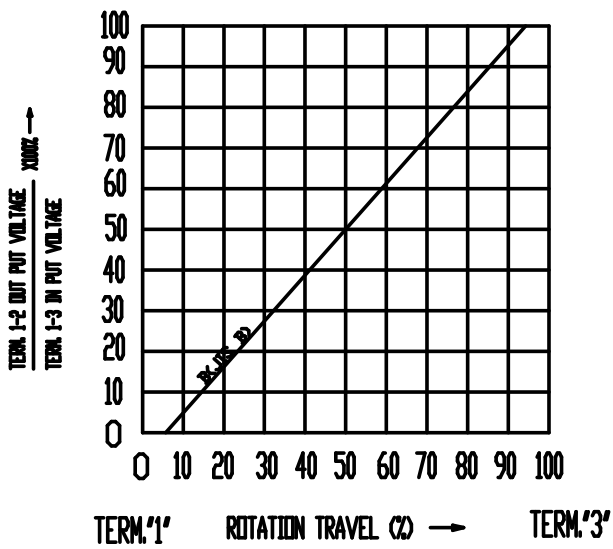


Tapers

TAPERS (A) SERIES



TAPERS (B) SERIES



TAPERS (C) SERIES

